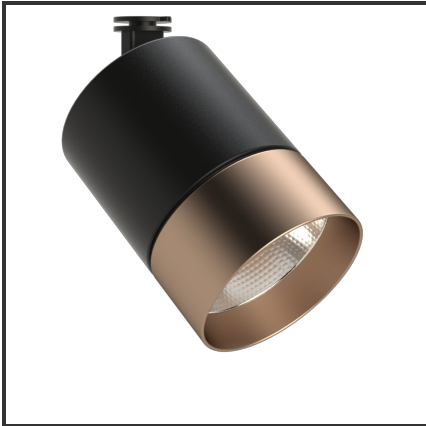




OKKO 10

9005 Koper 4000K/CRI90 60° on/off



| | | | |
|-------------------------|-------------------|----------------------------------|-------------------|
| Beamangle | 60° | IP | 40 |
| CIE Flux Codes | 96 99 100 100 100 | Kleur | RAL9005 |
| CRI | 90 | Kleur 2 | Koper |
| Colour Deviation (SDCM) | 3 sdcm | Led type | COB |
| Colour Temperature | 4000K | Lumen Maintenance | L80B10 bij 50.000 |
| Connected Load | 10W | Lumen/W | 100lm/W |
| Connected Voltage | 230VAC track-in | Luminous flux of luminaire | 1000lm |
| Dim | Nee | Material Housing | Aluminium |
| Dimensions | 122x83 | Material Lens/Reflector/Diffusor | Aluminium |
| Energy Efficiency Class | A++ | Mounting Type | Opbouw |
| Frequency | 50Hz | PF | 0,9 |
| IK | 06 | UGR | 24 |

Product Description

Reference : 000001033