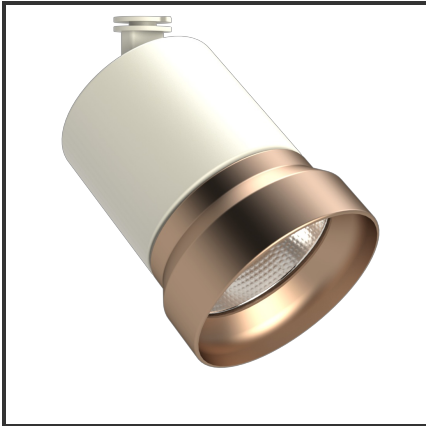




OQQU 10

9010 Koper 3000K/CRI90 36° Dali



Beamangle	36°	IP	44
CIE Flux Codes	99 99 100 100 100	Kleur	RAL9010
CRI	90	Kleur 2	Koper
Colour Deviation (SDCM)	3 sdc	Led type	COB
Colour Temperature	3000K	Lumen Maintenance	L80B10 bij 50.000
Connected Load	10W	Lumen/W	100lm/W
Connected Voltage	230VAC track-in	Luminous flux of luminaire	1000lm
Dim	Dali	Material Housing	Aluminium
Dimensions	122x93	Material Lens/Reflector/Diffusor	Aluminium
Energy Efficiency Class	A++	Mounting Type	Opbouw
Frequency	50Hz	PF	0,9
IK	06	UGR	19

Product Description

Reference : 000001459